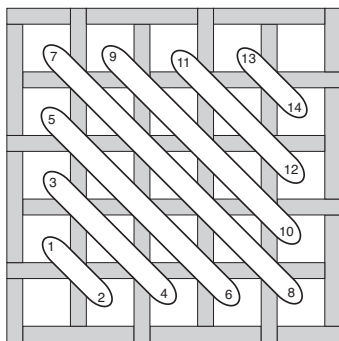
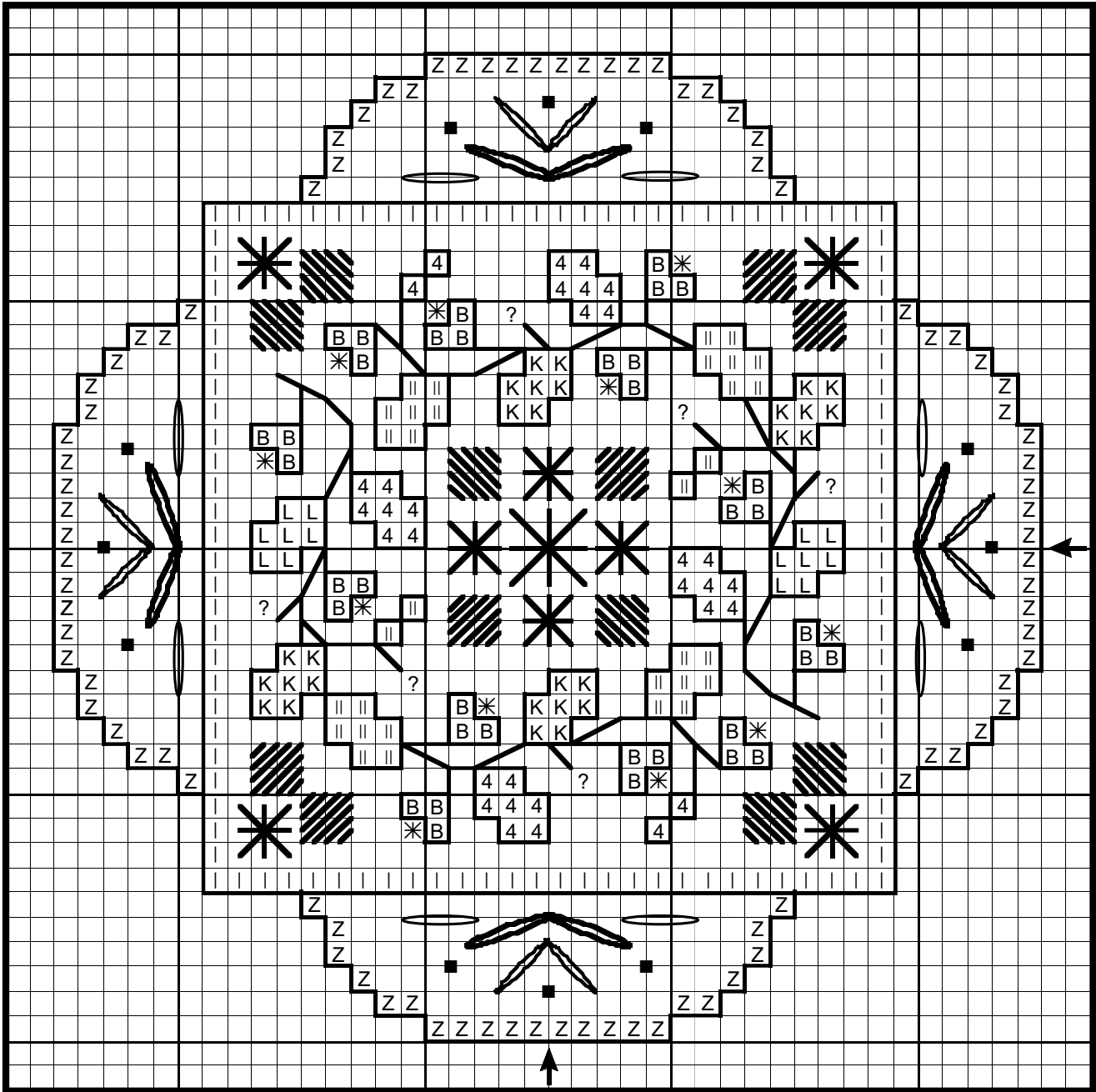


"English Cottage Sampler" Ornament

designed by Teresa Wentzler



diagonal satin stitch (over 4 threads)

COPYRIGHT NOTICE:

This is a "complimentary" chart, which means you *may* photocopy it. You may stitch it as many times as you'd like. Shopowners may give this chart to customers free of charge. However, since TW Designworks retains ownership of the copyright, *you may not sell this chart, or profit from it in any way!* Thank you for respecting the work of this designer, and for obeying copyright law!

Teresa Wentzler, TW Designworks

English Cottage Sampler Ornament

DMC

Stitch count: 40H X 40W

Z 422/437

I 931

L 501

K 502

4 503

II 504

B 224/778

Mill Hill Seed Beads:

? #00168 sapphire

* #00206 violet

■ #00479 white

Instructions: Cross stitch over two fabric threads using two strands of floss.

When two colors are listed together, use one strand of each. Backstitch using one strand of floss. For best results, please complete stitching in the order listed.

1. Complete all cross stitch first. This will give you a "framework" in which to work; it also gives you a place to anchor the floss when you begin the specialty stitches.

2. Do the backstitching next. This wear and tear on the piece should be finished before the more fragile specialty stitches are done.

Backstitch as follows:

stems and leaves: 500

blue border: 931

gold borders: 839

flowers: 316

3. Complete specialty stitches.

Please note: when stitching these motifs, extra care should be taken to ensure that tension is even and that floss strands do not twist; a smooth appearance will show these stitches to their best advantage.

a. Algerian eyelet: There are four of these located in each of the four corners of the blue border. Use two strands 316.

b. Mosaic stitch or Diagonal satin stitch: These are located in two different places: Next to each of the Algerian eyelets are two blocks of this stitch. Use two strands white. The other four blocks are located inside the vine border. For these, use two strands 3042.

c. Smyrna cross stitch: There are two different sizes of this stitch. The larger of

these is located in the exact center of the design: use two strands of white to do this stitch. Four smaller Smyrna crosses are placed around the central stitch: use 437/422 to complete them.

d. Lazy daisy: These are located inside each gold border. Use two strands 501 to stitch those indicated by the heavier lines. For the others, use two strands 502.

4. After all other stitching has been completed, attach the beads as follows:

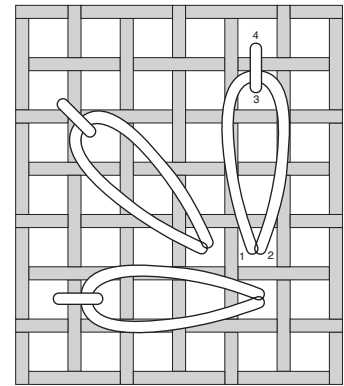
blue beads: use one strand 931

mauve beads: use one strand 316

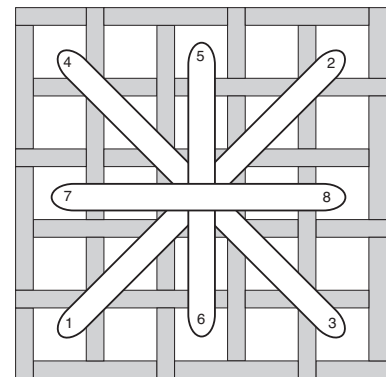
white beads: use one strand white

Note: beads will not "roll" on their sides if they are attached to the fabric using a full cross stitch: the floss is passed through the hole in the bead as each leg of the stitch is done.

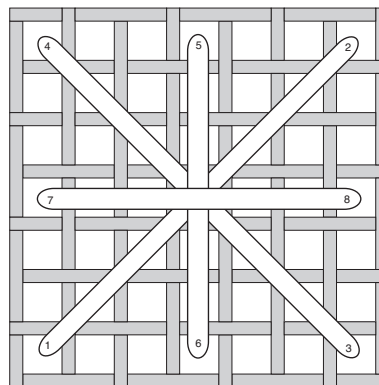
Your completed piece can be finished as you choose- perhaps framed, or made into a sachet or ornament. By completing this small design, you have been introduced to all the specialty stitches in "English Cottage Sampler". Enjoy!



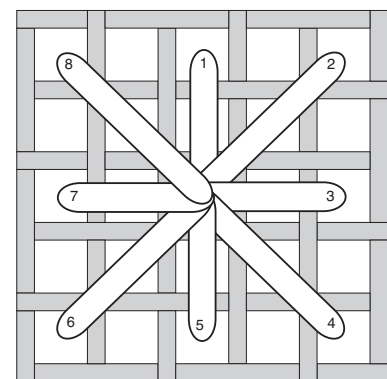
lazy daisy



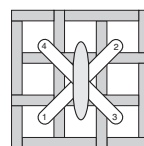
Smyrna cross (over 4 threads)



Smyrna cross (over 6 threads)



Algerian eyelet (over 4 threads)



attaching a bead using a full cross stitch

Dear Stitcher,

I hope you will enjoy this design. It was originally created as a teaching piece and an introduction to "English Cottage Sampler" (© by Leisure Arts, Inc.). All of the specialty stitches used in the large design were incorporated into the smaller piece, along with the main colors.

Teresa