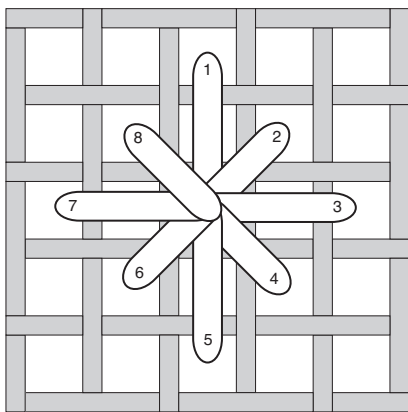
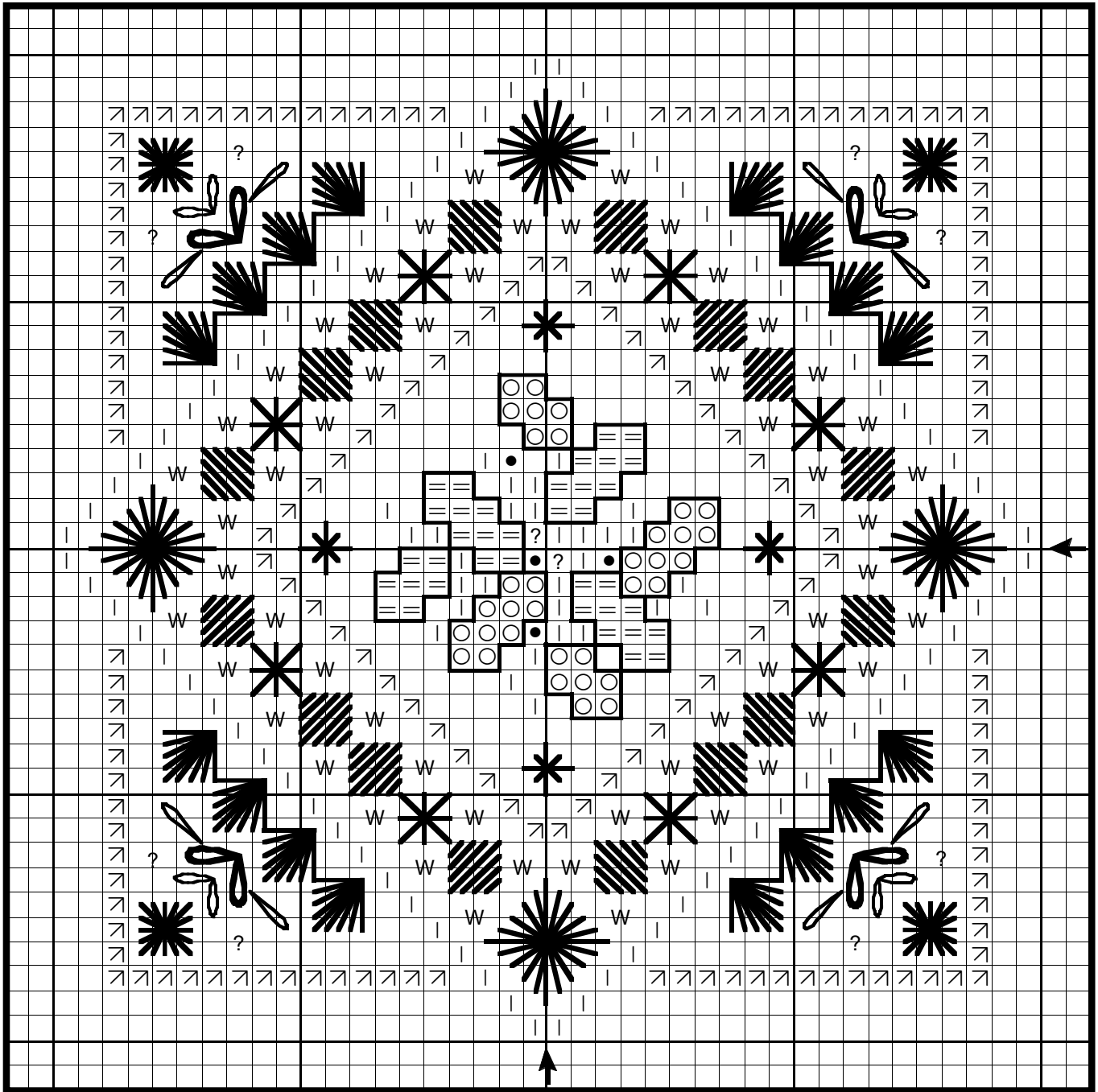
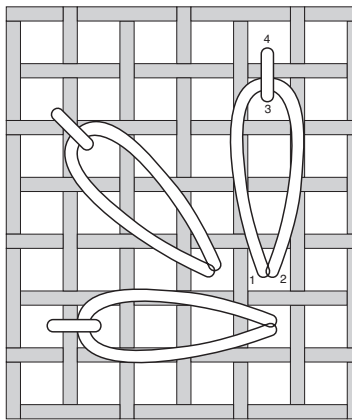


# "Father Winter" Ornament

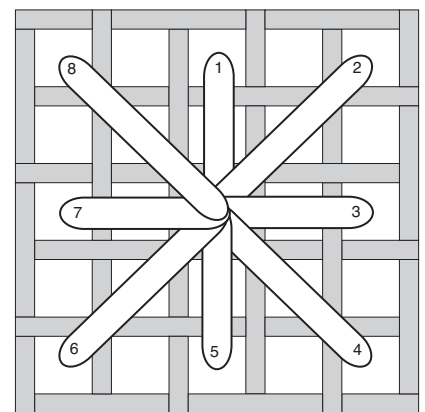
designed by Teresa Wentzler



diamond eyelet (over 4 threads)



lazy daisy



Algerian eyelet (over 4 threads)

## "Father Winter" Ornament

DMC Stitch count: 36W X 36H

- ↗ 422
- | 520
- 522
- = 503/524
- Mill Hill Seed Beads:
- W #00479 white
- ? #02004 tea rose
- #02012 royal plum

**Instructions:** Cross stitch using two strands floss. When two colors are listed together, use one strand of each. All whitework is done using two strands of white floss. [If you prefer, use three strands.] For best results, please do titching in the order listed.

1. Complete all cross stitch first. This will give you a "framework" in which to work. It also gives you a place to anchor your floss when beginning to stitch the whitework motifs.

2. Backstitch the holly leaves using one strand 520.

3. Complete all whitework motifs.

a. Complete diamond eyelets first. There are four of these. They are located just inside the diamond-shaped dark green border at each point.

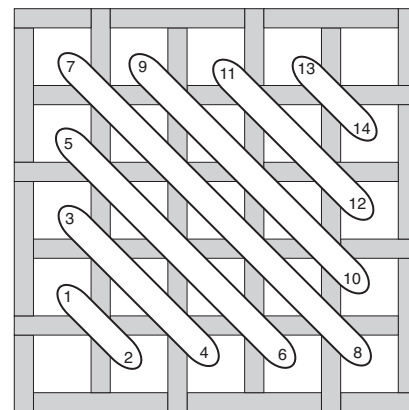
b. Stitch diagonal rows of diagonal satin stitch blocks and Algerian eyelets. It is not necessary to "end" each one of these stitches; simply proceed from one stitch to the next. [Make sure that carried threads do not show through the "eyes" of the Algerian eyelets.]

c. Complete the diagonal rows of "fan" motifs which appear in each corner of the design, just outside the dark green border. As before, you may complete each row of stitches without ending" each stitch. Think of each "fan" as a quarter of a large eyelet stitch. Also note that the "fans" next to each other have a hole with their adjoining "legs".

d. Finally, complete the eyelets located in each corner of the outer gold border.

4. Stitch small diamond eyelets just inside the inner gold border using two strands 3042.

5. Do the lazy daisy stitches. There are clusters of these in each corner of the outer gold border. Stitch the stitches indicated by the heavier lines using two strands 520. Then do the remaining stitches using two strands 522. Exact placement according to the chart is not absolutely essential, however, it is best, for the sake of symmetry in the design, that once you have stitched the first corner, that you stitch the remaining three in the same manner.

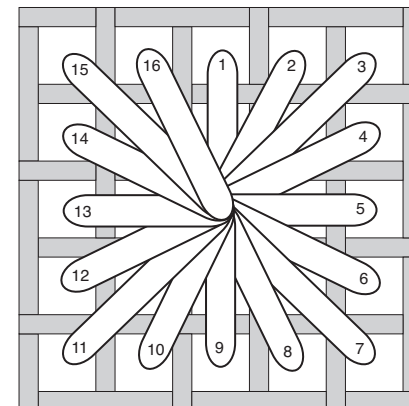


diagonal satin stitch (over 4 threads)

6. Lastly, attach the beads:  
 Royal plum: one strand 316.  
 Tea rose: one strand 316.  
 White: one strand white.

**Note:** Beads will not "roll" on their sides if they are attached to the fabric using a full cross stitch; the floss is passed through the hole in the bead as each leg of the stitch is done.

Your completed piece can be finished as you choose, perhaps framed, or made into a sachet or an ornament.



square eyelet (over 4 threads)

3. Complete all whitework motifs.

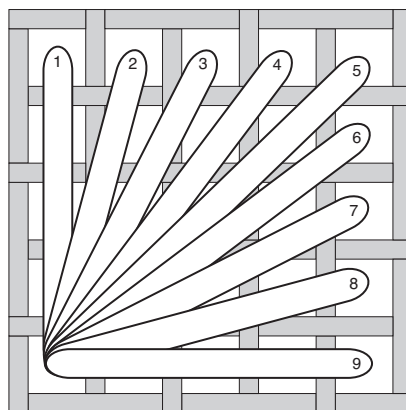
a. Complete diamond eyelets first. There are four of these. They are located just inside the diamond-shaped dark green border at each point.

b. Stitch diagonal rows of diagonal satin stitch blocks and Algerian eyelets. It is not necessary to "end" each one of these stitches; simply proceed from one stitch to the next. [Make sure that carried threads do not show through the "eyes" of the Algerian eyelets.]

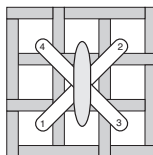
c. Complete the diagonal rows of "fan" motifs which appear in each corner of the design, just outside the dark green border. As before, you may complete each row of stitches without ending" each stitch. Think of each "fan" as a quarter of a large eyelet stitch. Also note that the "fans" next to each other have a hole with their adjoining "legs".

d. Finally, complete the eyelets located in each corner of the outer gold border.

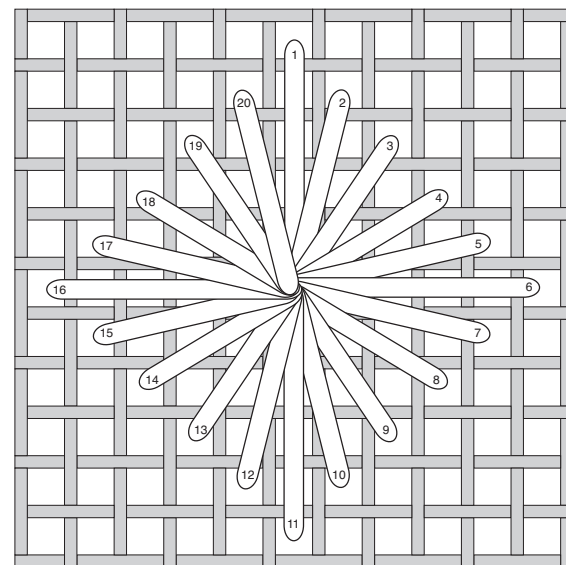
4. Stitch small diamond eyelets just inside the inner gold border using two strands 3042.



fan eyelet (over 4 threads)



attaching a bead using a full cross stitch



diamond eyelet (over 10 threads)

I hope you will enjoy this design. It was originally created as a teaching piece and an introduction to "Father Winter" (owned and copyrighted by Leisure Arts, Inc.) All of the specialty stitches in the large design were incorporated into this small one, along with the main colors. *Teresa*

### COPYRIGHT NOTICE:

This is a "complimentary" chart, which means you *may* photocopy it. You may stitch it as many times as you'd like. Shopowners may give this chart to customers free of charge. However, since TW Designworks retains ownership of the copyright, *you may not sell this chart, or profit from it in any way!*

**Thank you** for respecting the work of this designer, and for obeying copyright law!