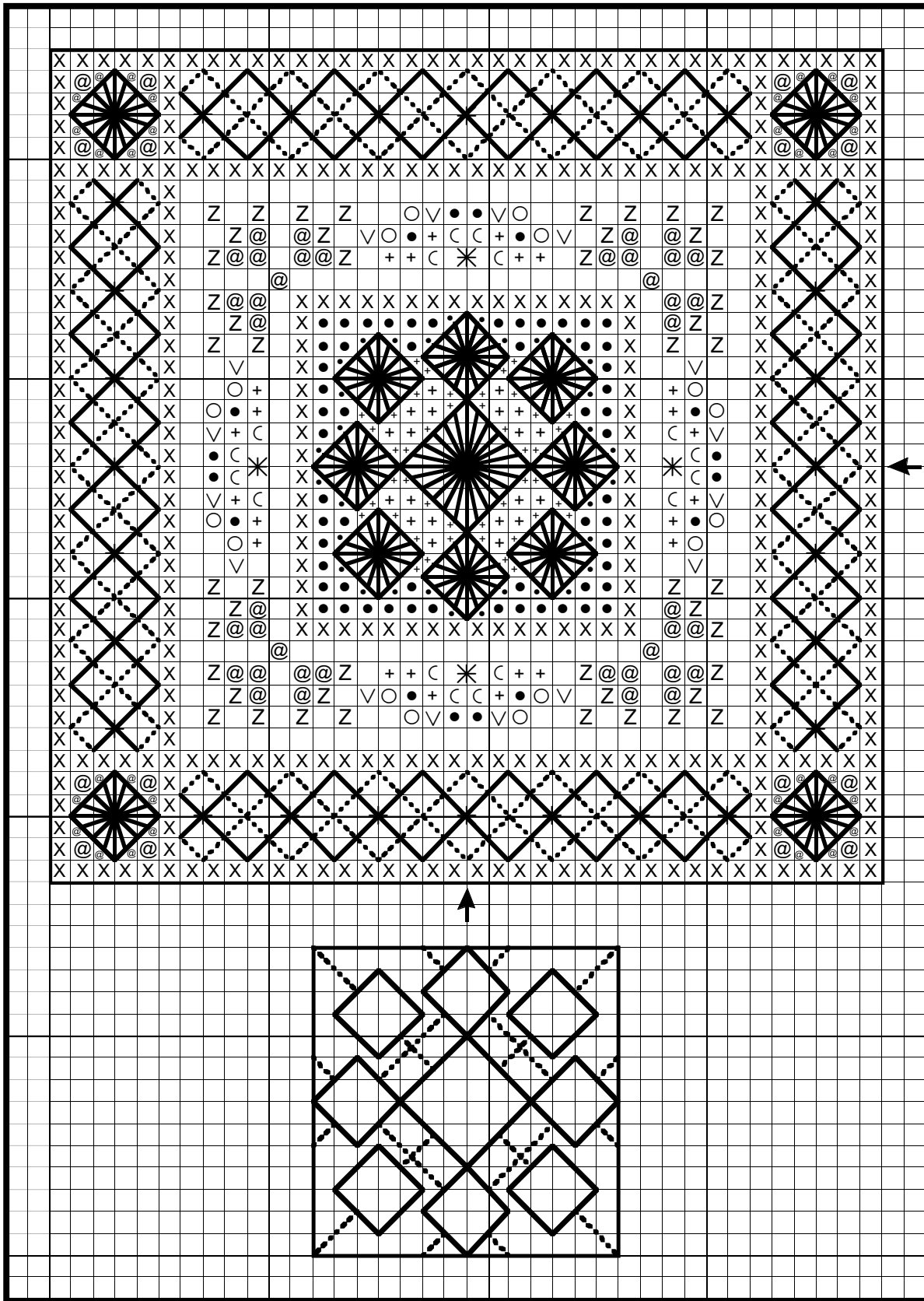


Peacock Tapestry Ornament



COPYRIGHT NOTICE: This is a “complimentary” chart, which means you *may* photocopy it. You may stitch it as many times as you’d like. Shopowners may give this chart to customers free of charge. However, since TW Designworks retains ownership of the copyright, *you may not sell this chart, or profit from it in any way!*
Thank you for respecting the work of this designer, and for obeying copyright law. Teresa Wentzler, TW Designworks

"Peacock Tapestry" Ornament

DMC

Stitch count: 38H X 38W

- 902/3740
- + 315/3721
- ◊ 3722/3726
- X 3045
- @ 3362/3051
- ∨ 3041/3042
- Z 3363/3052
- 437/3046

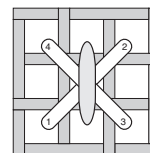
Mill Hill Seed Beads:

- * #00557 gold

Kreinik Metallics:

#102c Vatican gold cord

7. Lastly, attach the gold beads where indicated using one strand 3046. **Note:** beads will not "roll" on their sides if they are attached to the fabric using a full cross stitch: the floss is passed through the hole in the bead as each leg of the stitch is done.

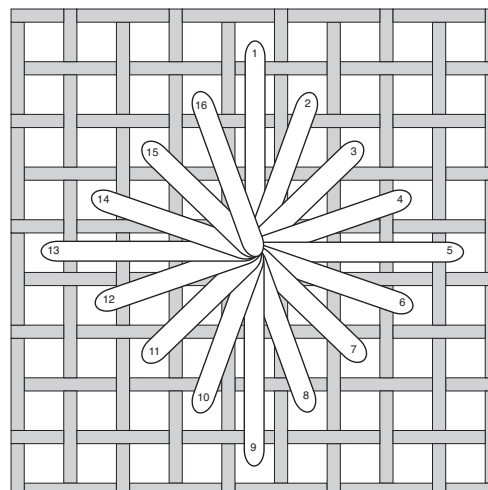


attaching a bead using a full cross stitch

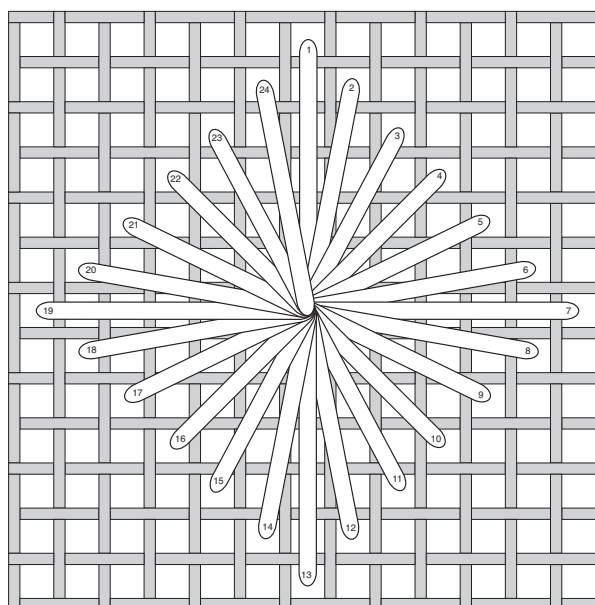
Your completed piece can be finished as you choose- perhaps framed, or made into a sachet or an ornament. By completing this small design, you have been introduced to all the specialty stitches in Peacock Tapestry. Enjoy!

Instructions: Cross stitch over two using two strands floss. When two strands are listed together, use one strand of each. Backstitch and straight stitch using one strand floss. For best results, please complete stitching in the order listed.

1. Complete all cross stitch first. This will give you a framework in which to work and will also provide a place to anchor the floss when doing the diamond eyelet stitches.
2. Stitch both sizes diamond eyelets. Please note: when doing these stitches, extra care should be taken to ensure that stitching tension is even and that floss strands do not twist; a smooth appearance will show them to their best advantage. All eyelets are stitched using 437/3046.
3. Straight stitch around diamond eyelets as follows:
Eyelets in center of design: use 3740
Eyelets in four corners of border: use 3790
4. Do straight stitching in the border strips as follows:
Dotted lines: use 315
Solid lines: use 3041
5. Backstitch around outside edge of design using 611.
6. Referring to the small diagram under the chart, use one strand gold cord and straight stitch where indicated with dotted lines. Be careful not to kink the cord, and when "carrying" it on the back of your work, be sure it doesn't show through the "eyes" of the diamond eyelets.



diamond eyelet (over 8 threads)



diamond eyelet (over 12 threads)

Dear Stitcher,

I hope you will enjoy this design. It was originally created as a teaching piece and an introduction to "Peacock Tapestry" (© Leisure Arts, Inc.) All of the specialty stitches in the large design were incorporated into this small one, along with the main colors.

Teresa